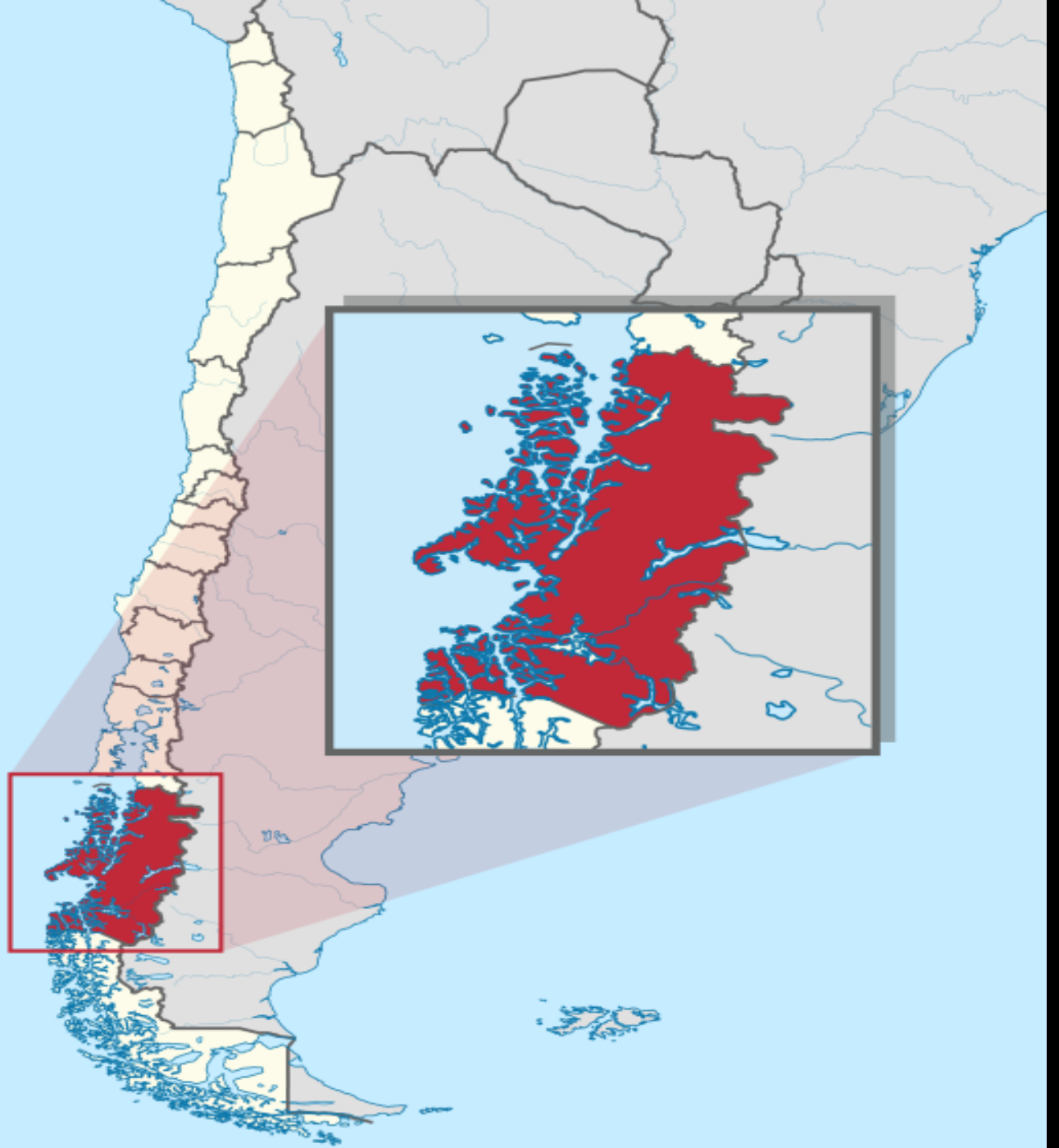


Educating future sustainability leaders in Chilean Patagonia.

















Picachos arriba del delta del Río Leones, y ñirres vestidos en sus trajes de colores de otoño. Aysén central.

*Lago Carrera,
una mirada
hacia el poniente
y el cordón
San Valentín.*





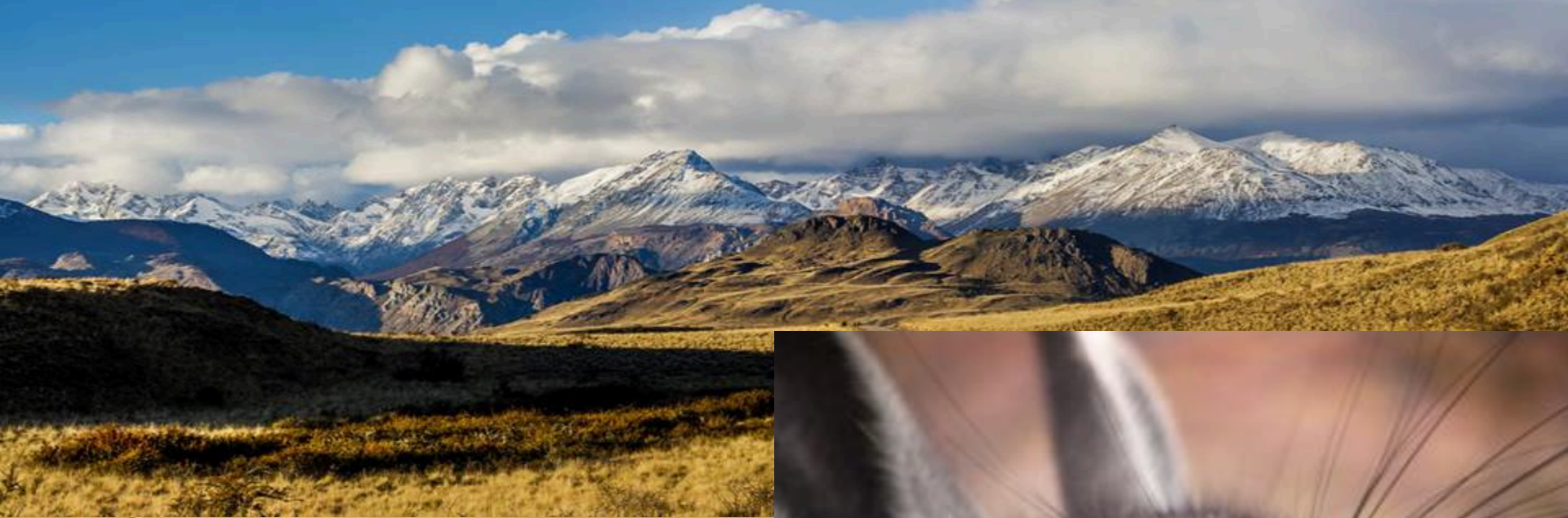
*El Río Baker en su
confluencia con el
Río Chacabuco,
menos caudaloso y
lleno de sedimentos.*







Future Patagonia National Park



Patagonia without Dams Campaign



Women in the Patagonia without Dams Campaign



In the 21 localities where we work 17 of the leaders are women



Women in Patagonia continue live between two emotions: pride and suffering









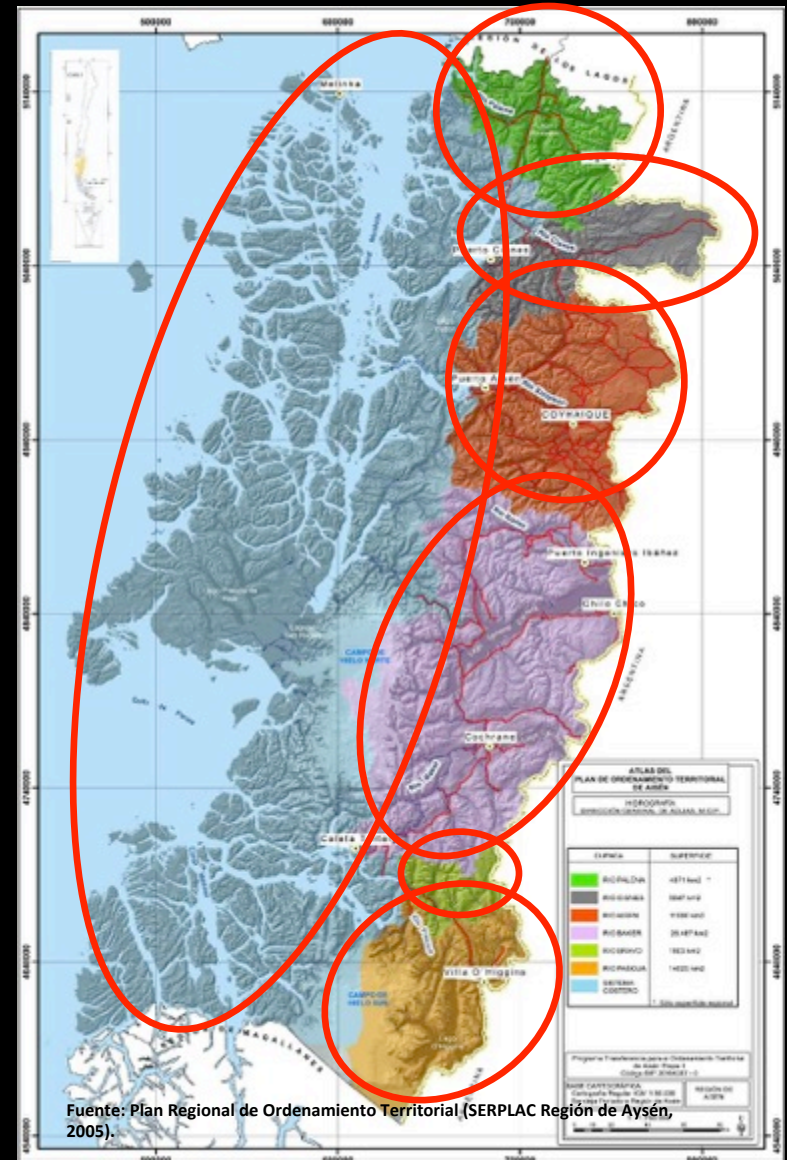




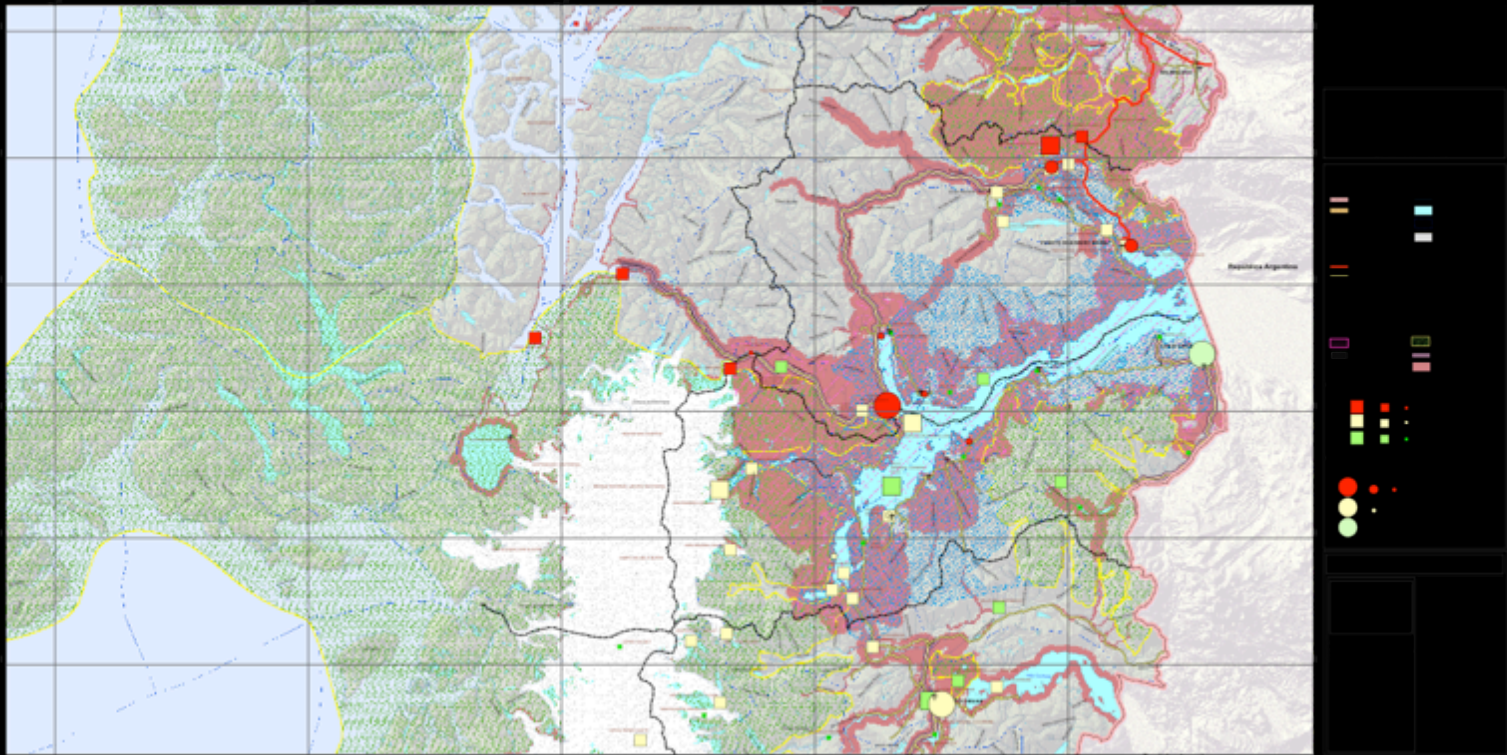


Water Rights: the new law

- RIO PALENA, área 7281 km²
- RIO CISNES, área 5196 km²
- RIO AYSEN, área 11236 km²
- RIO BAKER, área 20876 km²
1/3 DEL INTERIOR DE LA REGION
Cuenca con el Lago mas grande de chile,
2º sud América y el rio mas caudaloso.
- RIO BRAVO, área 1920 km²
- RIO PASCUA, área 6710 km²
- + COSTERAS



Prioritizing Turistic Zones



SCIENTIFIC TOURISM, A TOOL FOR SUSTAINABLE DEVELOPMENT IN PATAGONIA



Rios to Rivers



“WE MUST BEGIN THINKING LIKE A RIVER IF WE ARE TO LEAVE A LEGACY OF BEAUTY AND LIFE FOR FUTURE GENERATIONS”. – DAVID BROWER

Ríos to Rivers









Guided by the idea of “acquiring knowledge in order to value and protect” a program of young “patagones” was created.



We teach about renewable energy and energy efficiency



We keep on working with Patagonia youngsters. Help us to educate them !!!


First community center with ERNC



Young education program



037
Cafe 037

PATAGONIA
 **SIN** 
REPRESAS

